

How to Upgrade JC200

1. Before upgrading, please prepare:

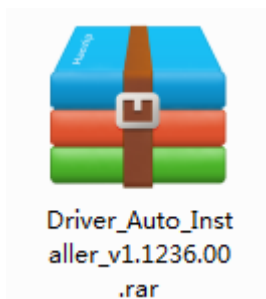
- Upgrading File (for example: KM8216_EN_USB_V1.0_20180312)
- SP_Flash_Tool (**SP_Flash_Tool_5.1604**)
- Micro USB cable ,same as android phone data cable



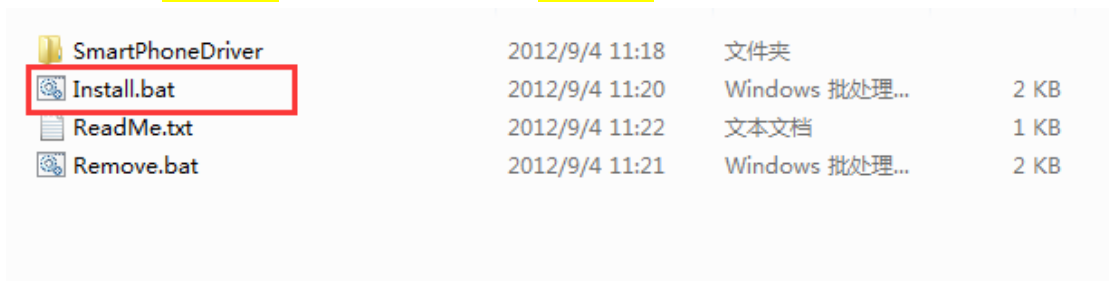
- Driver
(Driver_Auto_Installer_v1.1236.00 for win7)
(Driver_Auto_Installer_EXE_v5.1632.00 for win10)
- Computer with **WIN 7 or Windows XP system** or win10
(if win 10 not woks ,plz try win7)

2. Install Driver

- Extract **Driver_Auto_Installer_v1.1236.00**



- and find **Install.bat**, double –click to run **Install.bat**



- **Install.bat** starts to install. During installation, if the system warns, please allow to continue to install.
- When the installation is finished, it will show like bellow picture, then press any button to continue.

```
C:\Windows\system32\cmd.exe

*****Information*****
*****
Dirver Installer v1.0
Win 7
E:\下载工具及META\升级工具\Driver_Auto_Installer_v1.1236.00\SmartPhoneDriver/x64

*****
*****Install SP unsigned inf*****
*****
Install complete!

*****
*****Install SP signed inf*****
*****
Install complete!

请按任意键继续. . .
```

3. Install **SP_Flash_Tool** Upgrading Steps

Extract the Upgrading File (**SP_Flash_Tool_5.1604.rar**)

- Extract the SP_Flash_Tool file to another folder.

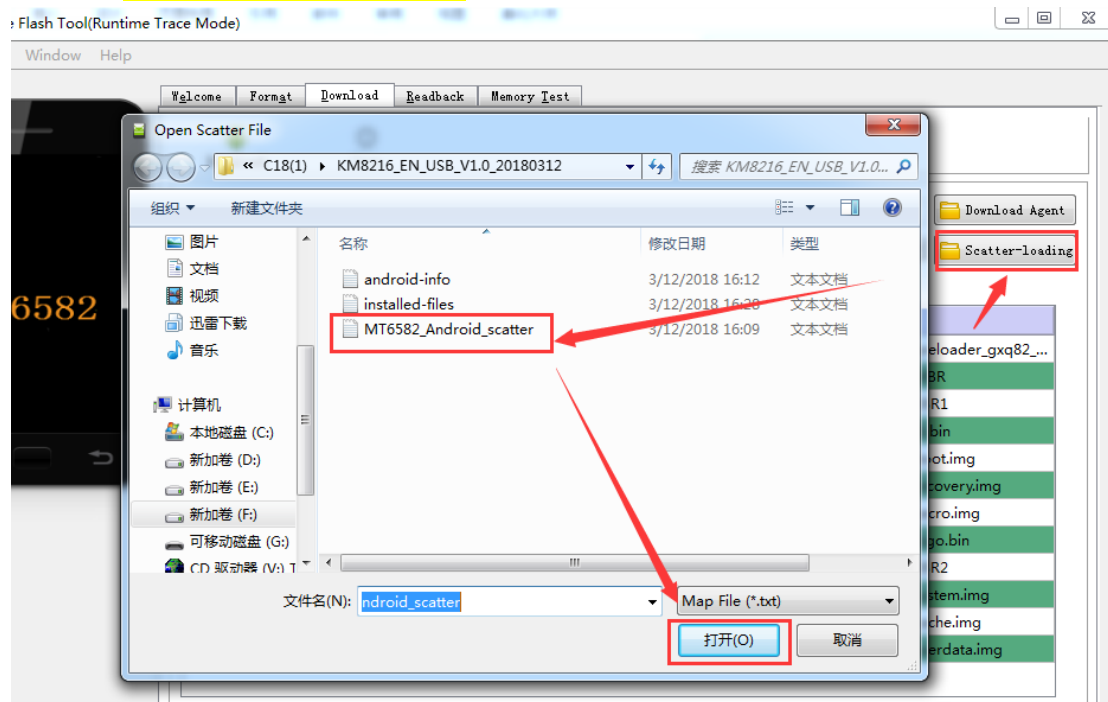


- No need to install **SP_Flash_Tool**. Among the depressed files, find **flash_tool.exe**, double click to run **flash_tool.exe**, it will show the bellow pictures:

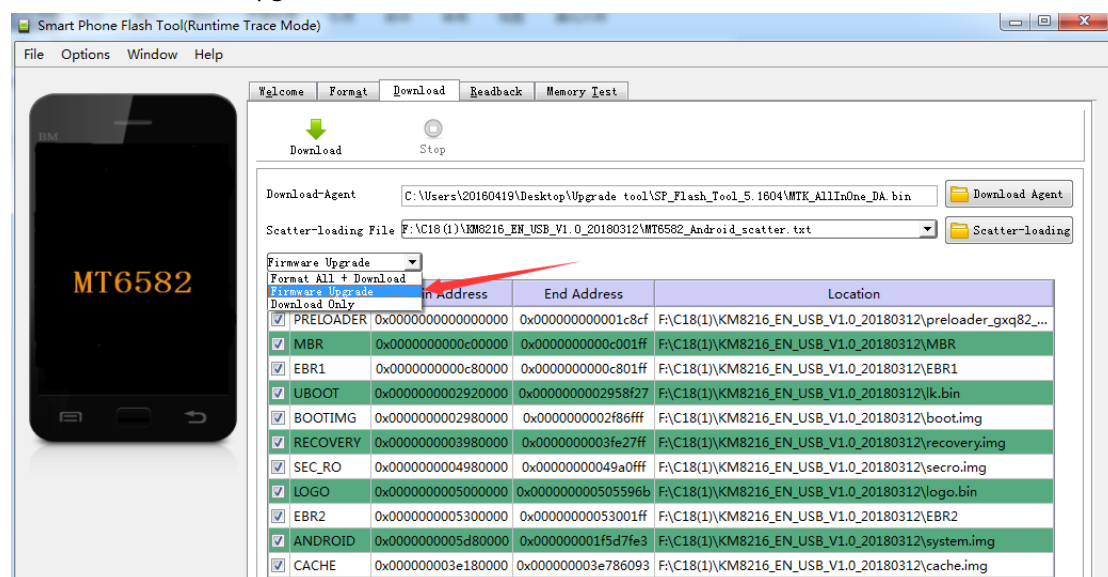
DA_SWSEC.bin	2014/8/14 10:54	VLC media file (....	2,501 KB
download_scene.ini	2014/8/11 15:00	配置设置	1 KB
flash_tool.exe	2014/8/11 15:00	应用程序	8,027 KB
flashtool.qch	2014/8/11 15:00	QCH 文件	6,414 KB
flashtool.qhc	2014/8/11 15:00	QHC 文件	12 KB
FlashToolLib.dll	2014/8/11 15:00	应用程序扩展	2,159 KB
history.ini	2015/4/30 9:53	配置设置	13 KB
Key.ini	2014/8/11 15:00	配置设置	2 KB

- Choose Firmware file

- Depress Upgrading File (KM8216_EN_USB_V1.0_20180312), and find **MT65XX_Android_scatter.txt**, choose it and open it to load upgrading file

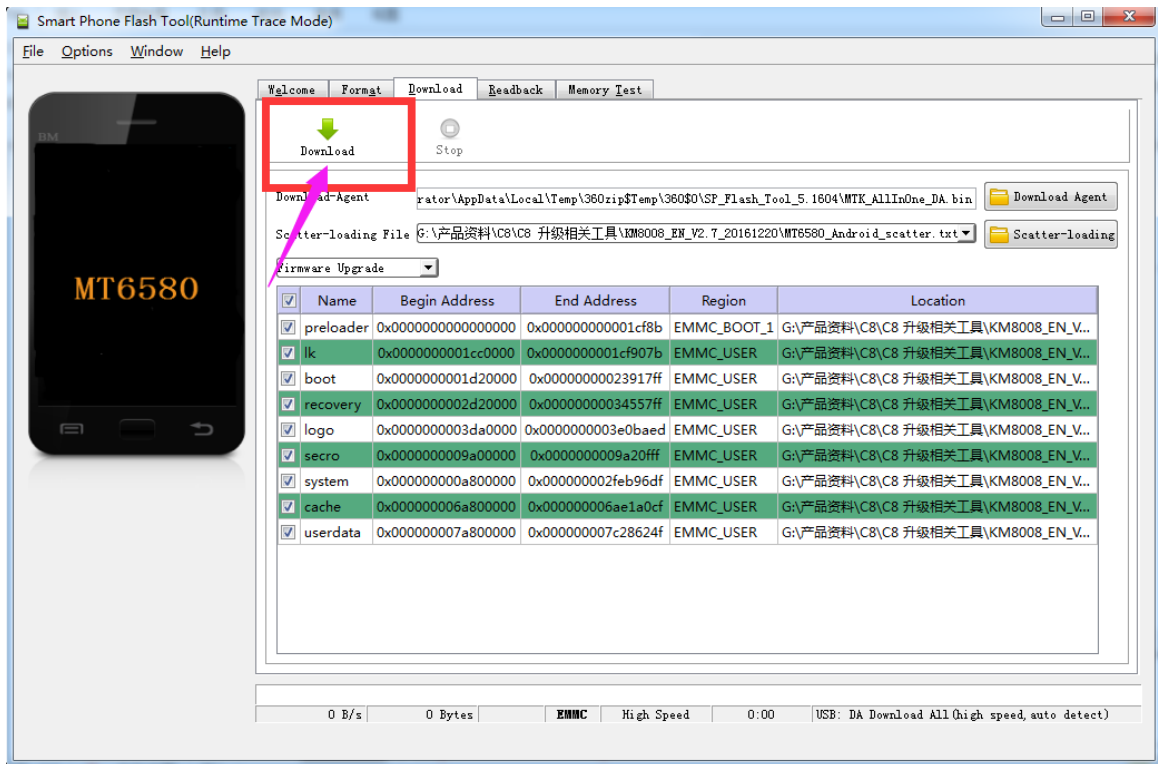


Chose the firmware upgrade

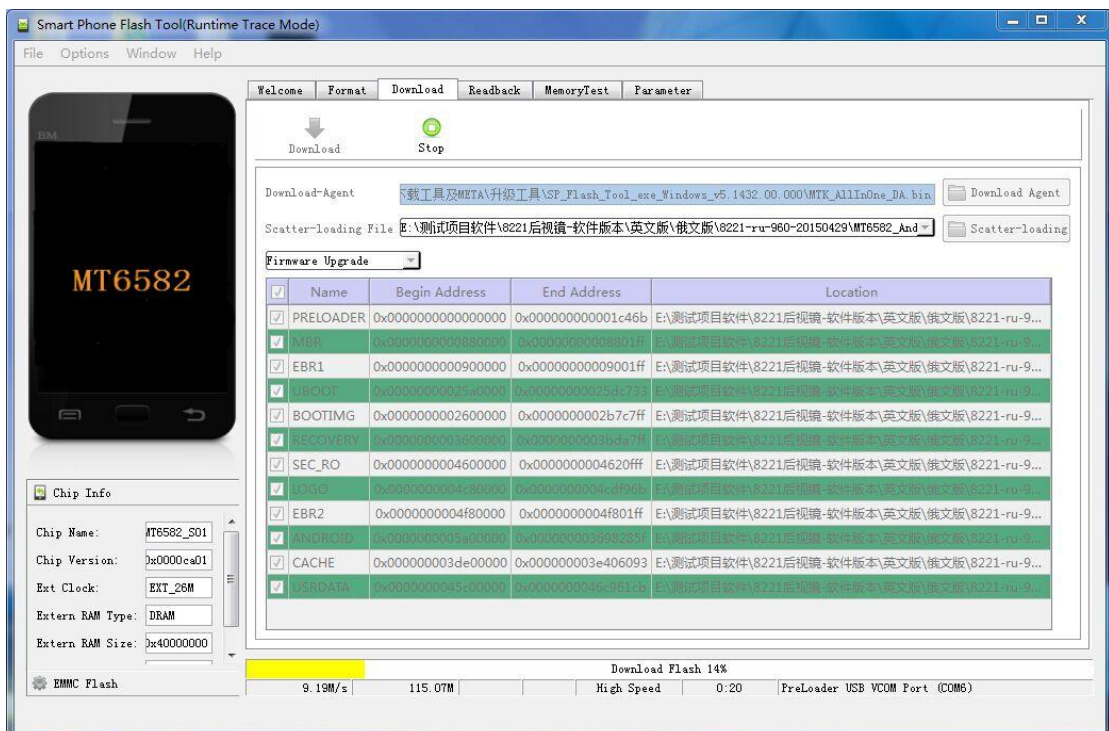


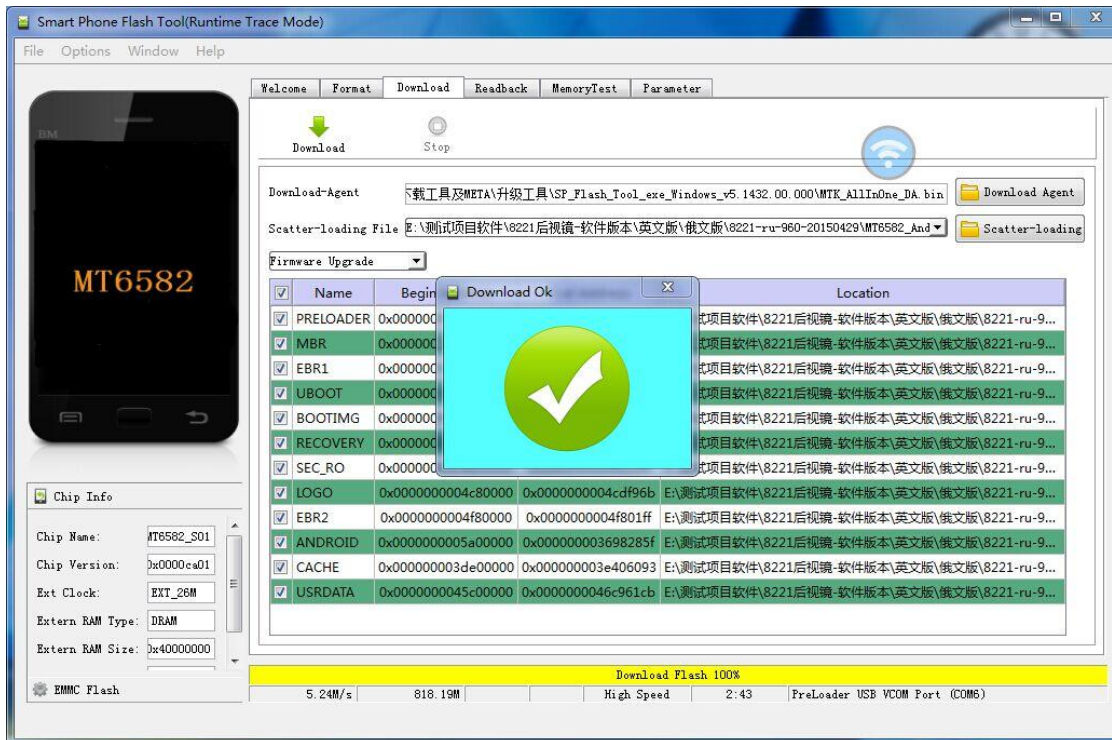
4. Wire the JC200 Device and Upgrade

- Choose **Download** in SP Flash Tool
- Turn off the device (disconnect from the power cable)
- Plug in the usb cable to PC and to device
- Connect the **Red wire(B+)** and **GND** wire to 12V power;



- After power on
The computer will detect the device first and install the driver . Then it starts to upgrade as bellow picture:





- If the computer no response, do the above steps again or try other ports in PC
 - After finish the upgrading, plug off the USB Cable
- It takes longer time to turn on the JC200 device first time after upgrading than usual.

END